

Meeting at a Glance

We invite you to join us for the Society of Surgical Oncology's 59th Annual Cancer Symposium, March 23-26, 2006, at the San Diego Marriott Hotel & Marina, in San Diego, California.

Target Audience

This program is intended for all surgeons who are involved in the treatment of patients with cancer.

Goals

The goals of this symposium are to: (1) present current approaches, developing innovations, and ongoing controversies in cancer management; and (2) contribute to the knowledge of surgeons as participants in multidisciplinary teams dedicated to the care of cancer patients.

Educational Objectives

Upon completion of this program, participants should be able to: 1) discuss the interdisciplinary management of breast cancer with an emphasis on targeted and systemic therapies, advances in surgical therapies such as lymphatic mapping and radiation therapy controversies; 2) describe the status of minimally invasive surgery in cancer care; 3) explain the evidence and controversial applications of CT/PET imaging in oncology; 4) discuss the role of molecular targeted cancer therapies; 5) describe how the practicing oncologist can become involved in clinical research; 6) describe the recent results from NIH funded cooperative group trials; and 7) explain the best practice for colon cancer screening prevention and management.

Accreditation

The Society of Surgical Oncology (SSO) is accredited by the Accreditation Council for Continuing Medical Education to provide continuing medical education for physicians. The SSO takes responsibility for the content, quality and scientific integrity of this CME activity.

SSO designates this educational activity for a maximum of 33.75 category 1 credits toward the AMA Physician's Recognition Award.

Each physician should claim only credits that he/she actually spent in the educational activity.

Accommodations and Attractions

The San Diego Marriott Hotel & Marina is the headquarters hotel and will house the entire meeting including all scientific sessions and exhibits. The San Diego Marriott, located at the water's edge, offers a superior level of service in a lush resort setting. It's ideally located adjacent to Seaport Village and features several restaurants and lounges, room service, and a state-of-the-art fitness center.

The San Diego Marriott is a 10 minute cab ride from San Diego International Airport.

Hotel reservations must be made through the PassKey Reservations System via the internet (www.surgonc.org) or by phone. A credit card will be required to guarantee your reservation.

For best availability, make your reservation via the internet at www.surgonc.org. You may also make reservations by calling (800) 266-9432. Any changes / cancellations to your reservation must be made through the PassKey Reservations System either by the internet or by phone through February 27, 2006. Please do not call the hotel directly as they will not have access to the SSO room block, PassKey Reservations System or the group rate until after February 27, 2006.

The deadline for reservations is Monday, February 27, 2006.

Hotel reservations / rate availability are not guaranteed after the room block is full or after February 27, 2006. Please register early – only a limited number of rooms are available at the hotel.

Special Airfare Discounts

SSO has arranged with United Airlines for special discounts on airfares to San Diego. Save up to 15% when your tickets are purchased at least 30 days in advance. Travel must take place between March 18-31, 2006 and some restrictions may apply. Please mention the SSO Meeting ID number (listed below) when making your airline reservations.

To book your reservation, call SSO's official travel agency, Uniglobe Preferred Travel, at 1-800-626-0359 and after the prompt dial "0" (M-F 8:30 am – 5:30 pm CST).

If you prefer you may:

- Book your travel online at www.uniglobepreferred.com. Scroll down and click on Rapid-Rez icon. When the booking page comes up, click on

San Diego

“Sign In/New Account” in the upper left portion of the screen. Fill in your Member ID and Password or if this is your first time at the site, click on “create a new account” and then fill in the required information. Please record your Member ID and your Password for future use. Discount fares are automatically displayed and booking through this site will have a reduced agency service fee of \$15.

- Call United’s toll-free number, 1-800-521-4041. Mention the SSO Meeting ID Code, 560QO, to qualify for discount fares.

In addition, Delta Air Lines offers new SimpliFares™, with flexible minimum stay requirements; significantly reduced fares, and lower change fees.

To make reservations, call Delta Air Lines at 1-800-221-1212 or visit www.delta.com. Be sure to include your Skymiles frequent flyer number and the Society of Surgical Oncology SkyBonus number #US479900356.

Auto Rental Discounts

Hertz Car Rental has been designated as the official car rental company. Reservations may be placed online at www.hertz.com or through the Hertz Meeting Sales Desk at (800) 654-2240. From within Canada call (800) 263-0600. When booking reservations through Hertz, please reference the Meeting Number CV# 025B0011 to get the qualified discounts.

Temperature

The average March temperature in San Diego ranges from 52° to 66°.

Table of Contents

Goals and Objectives	2
Accreditation	2
Hotel and Airline Info.	2-3
Chairman’s Message	3
Thursday Program	4
Friday Program	9
Saturday Program	14
Sunday Program	21

Scientific Program Chairman’s Message

On behalf of SSO President Dr. Timothy Eberlein, the Executive Council and the Scientific Program Committee, I invite you to attend the 59th Annual Cancer Symposium of the Society of Surgical Oncology, March 23-26, 2006 in San Diego, California.



Dr. Nelson

Controversies, standards, and emerging innovations are the focus for this year’s scientific meeting. From the role of molecular signatures in breast cancer to cine videos on endosurgery in gastrointestinal cancer, the future is the target for the podium.

This year’s scientific program committee has done a fine job of providing a balanced perspective on topics of interest from the latest in laboratory research to the most practical in clinical standards. The program is complemented by excellent invited speakers, podium and poster abstracts, educational symposiums, and Meet-the-Professor Breakfasts.

We are honored to have an exceptional group of invited speakers, including: Bruce Stillman, M.D., American Cancer Society Lecture; James Economou, M.D., James Ewing Lecture; and Murray F. Brennan, M.D., John Wayne Clinical Research Lecture. Dr. Charles M. Balch will be honored with the Annual Heritage Award.

A record-high 489 abstracts were reviewed by specialty-based committees with 103 chosen for oral presentation and 230 selected for poster presentation. The quality was excellent; a lot to look forward to at this year’s meeting. A visual tour of technical aspects of laparoscopic surgery for cancer is a highlight of this year’s cine clinic.

Several excellent educational symposia and world-renowned Professors have been included in the program to encourage focused discussions on topics of interest to surgical oncologists. Finally, sessions on “Clinical Trial Highlights – 2006” and “Clinical Research and the Practicing Oncologist” should stimulate dialogue on better ways to engage community surgeons in NCI-sponsored cancer trials.

We look forward to seeing you in San Diego.

Sincerely,

Heidi Nelson, M.D.
Chair, Scientific Program Committee

Thursday, March 23

Breakfast Symposium

**Advances in the Systemic Therapy
and Surgical Management of Breast Cancer**

6:00 – 8:00 am

Moderator: Lisa A. Newman, MD

***Welcome and Overview -
Expanding and Refining Non-Operative
Therapy or Breast Cancer: Where Does
the Surgical Oncologist Fit In?***

Lisa A. Newman, MD
University of Michigan
Ann Arbor, MI

***Systemic and Targeted Therapy for Breast
Cancer: The Role Oncotyping, Herceptin,
and Aromatase Inhibitors***

Debu Tripathy, MD
University of Texas Southwestern Medical Center
Dallas, TX

***Lymphatic Mapping and Sentinel Lymph
Node Biopsy for Breast Cancer: Who Needs
the Standard Axillary Lymph Node Dissection?***

Hiram S. Cody, III, MD
Memorial Sloan-Kettering Cancer Center
New York, NY

***NSABP Perspective on Neoadjuvant
versus Adjuvant Chemotherapy***

Terry P. Mamounas, MD, MPH
Aultman Cancer Center
Canton, OH

***Controversial Issues in Radiation Therapy
for Breast Cancer***

Thomas Buchholz, MD
University of Texas M.D. Anderson Cancer Center
Houston, TX

Panel Discussion

Symposium

Molecular Targeted Cancer Therapies

8:00 – 10:00 am

Moderator: Kelly M. McMasters, MD, PhD

Welcome and Introduction

Kelly M. McMasters, MD, PhD
University of Louisville
Louisville, KY

Anti-angiogenic Targets for Cancer Therapy

Lee M. Ellis, MD, PhD
University of Texas, M.D. Anderson Cancer Center
Houston, TX

Targeting Her2/Neu for Breast Cancer Therapy

George Sledge, MD
Indiana University School of Medicine
Indianapolis, IN

***EGFR as a Molecular Target
for Cancer Therapy***

Roman Perez-Soler, MD
New York University School of Medicine
New York, NY

***In the Pipeline: New Prospects
for Targeted Cancer Therapy***

Edward A. Sausville, MD, PhD
University of Maryland Greenebaum Cancer Center
University of Maryland School of Medicine
Baltimore, MD

Discussion

Thursday, March 23

Minimally Invasive Cancer Surgery – State of the Science

8:00 – 10:00 am

Moderator: Martin R. Weiser, MD

Primary Ablation of Breast Lesions

Rache M. Simmons, MD
Associate Professor of Surgery
Weill Medical College of Cornell University
New York, NY

Current Role of Laparoscopic Pancreatectomy

Attila Nakeeb, MD
Associate Professor of Surgery
Indiana University School of Medicine
Indianapolis, IN

Minimally Invasive Rectal Resection

Martin R. Weiser, MD
Assistant Surgeon, Memorial Sloan-Kettering Cancer
Center; Assistant Professor of Surgery, Weill Medical
College of Cornell University
New York, NY

Laparoscopic and Robotic Approaches to Prostatectomy

Peter G. Schulam, MD, PhD
Associate Professor, Department of Urology
David Geffen School of Medicine at UCLA
Los Angeles, CA

Symposium

CT-PET Imaging: Evidence-Based Indications and Controversies

10:30 am - Noon

Moderator: Seza A. Gulec, MD

Introduction

Seza A. Gulec, MD

Principles of Current Technology

Edward Coleman, MD
Duke University Medical Center
Durham, NC

Clinical Applications Pros and Cons:

Melanoma

Douglas J. Schwartzentruber, MD
Center for Cancer Care at Goshen Health System
Goshen, IN

Breast

David J. Winchester, MD
Northwestern University Feinberg School of
Medicine, Evanston Northwestern Healthcare
Evanston, IL

Gastrointestinal

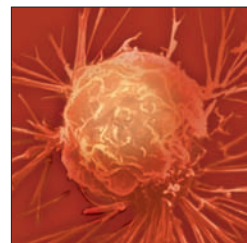
Jose Guillem, MD
Memorial Sloan-Kettering Cancer Center
New York, NY

Future Technologies

Richard Wahl, MD
Johns Hopkins PET Center
Baltimore, MD

PET Imaging as a Tumor Marker

Seza A. Gulec, MD
Center for Cancer Care at Goshen Health System
Goshen, IN



Thursday, March 23

Breast Cancer Evolving Research and Practice Patterns

10:30 am - Noon

Moderator: Henry M. Kuerer, MD, PhD

Post-mastectomy Radiation and the Surgical Oncologist: Implications for Reconstruction

Steven Kronowitz, MD
University of Texas, M.D. Anderson Cancer Center
Houston, TX

Preoperative Treatment for DCIS

E. Shelley Hwang, MD
University of California San Francisco
San Francisco, CA

Onco-type DX: Is There Any Clinical Utility?

Terry Mamounas, MD, MPH
Aultman Hospital
Canton OH

Integrating Recent Landmark Systemic Therapy Data into Clinical Practice:

What the Surgeon Needs to Know

William J. Gradishar, MD
Northwestern University
Chicago, IL

Foregut Cancer – Evolving Research and Practice Interests

1:00 - 3:00 pm

Moderator: Mitchell C. Posner, MD

Introduction

Mitchell C. Posner, MD
Professor and Chief
University of Chicago
Chicago, IL

Population Sciences Update:

Improving the Outcomes of Esophageal, Gastric and Pancreatic Cancer

John D. Birkmeyer, MD
GD Zuidema Professor of Surgery
University of Michigan
Ann Arbor, MI

Adjuvant Therapy, Neoadjuvant Therapy or Resection Only:

Gastric and Esophageal Cancer

David H. Ilson, MD
Associate Professor, Cornell University Medical College and
Associate Attending, Memorial Sloan-Kettering Cancer Center
New York, NY

Pancreatic Cancer

Peter W.T. Pisters, MD
Professor of Surgery
University of Texas, M.D. Anderson Cancer Center
Houston, TX

Minimally Invasive Surgery for Foregut Cancer – Is it the Future?

Minimally Invasive Approaches to Esophageal and Gastric Cancer

Yuko Kitagawa, MD
Assistant Professor
Keio University School of Medicine
Tokyo, Japan

The Role of Endosurgery in Foregut Cancer – The Future Has Arrived

Irving Waxman, MD
Professor of Medicine, Surgery and the Cancer Research Center; Director of Endoscopy, University of Chicago
Chicago, IL

Thursday, March 23

Clinical Research and the Practicing Oncologist

1:00 - 3:00 pm

Moderators: Terry Mamounas, MD and Peter W.T. Pisters, MD

Becoming an NCI-Approved Clinical Investigator

Margaret M. Mooney, MD
National Cancer Institute
Bethesda, MD

Working With Your IRB

Scott H. Kurtzman, MD
University of Connecticut Health Center
Farmington, CT

Maintaining a Research Program of the Highest Quality

Walt Cronin, MPH
NSABP Biostatistical Center
Pittsburgh, PA

Implementing Clinical Research in a Private Practice Setting

Thomas G. Frazier, MD
Bryn Mawr Hospital
Bryn Mawr, PA

Discussion

Symposium

Advances in Nutritional Support of the Surgical Cancer Patient

3:30 - 5:30 pm

Moderator: John M. Daly, MD

Introduction – “Brief History of Immunonutrition”

John M. Daly, MD
Professor of Surgery and Dean
Temple University School of Medicine
Philadelphia, PA

Nutrition Support:

Who Benefits? Who Doesn't?

Kenneth Kudsk, MD
Professor of Surgery
Vice Chairman of Surgical Research
University of Wisconsin
Madison, WI

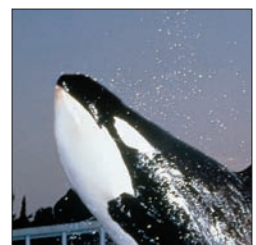
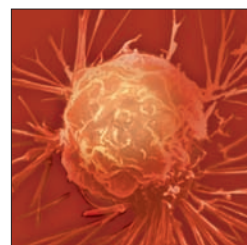
Role of Arginine in the Care of the Surgical Patient

Adrian Barbul, MD
Surgeon-in-Chief and Professor of Surgery
Sinai Hospital, Johns Hopkins University
Baltimore, MD

Clinical Trials of Immunonutrition in Surgical Cancer Patients

Marco Braga, MD
Professor of Surgery
University of Milan, San Raffaele Hospital
Milan, Italy

Discussion



Thursday, March 23

**Controversies in Surgical Oncology:
Can We Define an Evidence Based Standard of Care?**

3:30 - 5:30 pm

Moderator: Daniel G. Coit, MD

Multimodality Therapy is NOT the Standard of Care for Adenocarcinoma of the GE Junction

Pro: Tom R. DeMeester, PhD
University of Southern California, Los Angeles, CA
Con: Mitchell C. Posner, MD
University of Chicago, Chicago, IL

The Optimal Margin of Resection for All Melanomas is 1 cm

Pro: Vernon K. Sondak, MD
H. Lee Moffitt Cancer Center, Tampa, FL
Con: Merrick I. Ross, MD
University of Texas M.D. Anderson Cancer Center
Houston, TX

Completion Axillary Lymph Node Dissection is Unnecessary for Sentinel Node Positive Breast Cancer

Pro: Blake Cady, MD
Rhode Island Hospital, Providence, RI
Con: Kelly M. McMasters, MD, PhD
University of Louisville, Louisville, KY

Cancer Forum I – Signaling and Apoptosis

3:30 - 5:30 pm

Moderators: Daniel Albo, MD and James C. Cusack, Jr., MD

Nuclear Factor Kappa B Regulates Beta-Catenin Expression and Function in Human Colon Cancer Cells

Christopher Smolock, MD
University of Pennsylvania, Philadelphia, PA

Mechanisms of MET Dysregulation and Ligand-Dependency in Human Colorectal Cancer

T. Francone, MD
Memorial Sloan-Kettering Cancer Center, New York, NY

Expression of IL-8 in Pancreatic Tumor Cells is Regulated by a Src/STAT3

Jose G. Trevino, MD
University of Texas M.D. Anderson Cancer Center,
Houston, TX

RON Tyrosine Kinase: A Novel Target for Enhancing Molecular Therapy in Colorectal Cancer

Ashwani Rajput, MD
Roswell Park Cancer Institute, Buffalo, NY

Escape from Endogenous Interferon Gamma Anti-Tumor Effects by Alteration of IRF-1 and IRF-2 Responses

B.D. Saunders, MD
University of Michigan, Ann Arbor, MI

Tat-Bim Protein Induces Apoptosis in Cancer Cells

Hiroyuki Kashiwagi, MD
Washington University, St. Louis, MD

A Novel Small Molecule FAK Tyrosine Kinase Inhibitor Increases Apoptosis in Pancreatic Adenocarcinoma Cells

Steven Hochwald, MD
University of Florida College of Medicine, Gainesville, FL

Deregulation of JNK in Response to Chemotherapy When NF-KB is Inhibited: A Potential Target in Chemosensitive Pancreatic Cancers

Hong Kin Kim, MD
University of North Carolina, Chapel Hill, NC



Welcome Reception

7:30 – 9:00 pm

Join us for hors d'oeuvres, refreshments and socializing. This complimentary event will be held at the San Diego Marriott Hotel and is open to all physician registrants and registered guests.

Meet the Professor Breakfasts

6:30 - 7:30 am

Registration Required • Fee: \$35 • Limit: 25 per breakfast

Each continental breakfast will feature presenters of international prominence.

To ensure your selection, please register as early as possible. Indicate your selection on the enclosed registration form.

- | | |
|--|--|
| B1 The Significance of Positive Margins in Sarcoma Surgery
Murray F. Brennan, MD | B5 Preserving the Aesthetic Breast: Best Practices
Benjamin O. Anderson, MD
Grant W. Carlson, MD |
| B2 Parathyroid Surgery – The Application of New Technologies
Nancy D. Perrier, MD | B6 Laparoscopic Distal Pancreatectomy – Really?
Mitchell C. Posner, MD |
| B3 Sentinel Lymph Node Mapping Aberrations and Challenges in Breast Cancer
Hiram S. Cody, III, MD | B7 Melanoma – Optimal but Practical Nodal Management Strategies
Vernon K. Sondak, MD |
| B4 Cryoblation of Breast Cancer – Technical Aspects
Rache M. Simmons, MD | B8 Surgical Education – What's Next and What to Do About It
David P. Jaques, MD |

Opening Announcements

7:30 - 7:45 am

Timothy J. Eberlein, MD, SSO President
Heidi Nelson, MD, Scientific Program Chairman
Robert M. Barone, MD, Local Arrangements Chairman

Presentations from James Ewing Oncology Fellowship Award Winners

7:45 - 8:00 am

J. Pablo Arnoletti, MD
Eric Nakakura, MD
Sophie Dessureault, MD

Plenary Session I

8:00 - 9:00 am

Moderator: Raphael E. Pollock, MD, PhD

Surgical Complications Associated with Sentinel Lymph Node Dissection (SLND) Plus Axillary Lymph Node Dissection, Versus SLND Alone in the American College of Surgeons Oncology Group (ACOSOG) Trail Z0011

Anthony Lucci, MD
University of Texas M.D. Anderson Cancer Center
Houston, TX

Anaplastic Thyroid Carcinoma: Expression Profile of Targets for Therapy Offers New Insights for Disease Treatment

Sam Wiseman, MD
St. Paul's Hospital, University of British Columbia
Vancouver, Canada

Trends in the Treatment and Outcome of Pancreatic Cancer in the United States

Nancy Baxter, MD
University of Minnesota
Minneapolis, MN

An International, Randomized, Double-Blind, Phase 3 Study of the Specific Active Immunotherapy Agent, Onmelatucel-L (Canvaxin™), Compared to Placebo as a Post-Surgical Adjuvant in AJCC Stage IV Melanoma

Donald L. Morton, MD
John Wayne Cancer Institute
Santa Monica, CA

Plenary Session II

10:15 - 11:00 am

Moderator: Nicholas J. Petrelli, MD

SSO Presidential Address

Assessing the State of Surgical Oncology: The Future is Now

9:00 - 9:45 am



Timothy J. Eberlein, MD
Bixby Professor and Chairman
Department of Surgery,
Washington University School
of Medicine, Spencer T. and Ann
W. Olin Distinguished Professor,
Director, Alvin J. Siteman Cancer
Center, Surgeon-in-Chief, Barnes
-Jewish Hospital, St. Louis, MO

Cyclin Dependent Kinase2-Associated Protein (CDK2-AP1) Expression and Modulation of Cell Growth and Apoptosis in Microsatellite-Unstable (MSI) Colorectal Cancer (CRC)

P.V. Sreeramoju, MD
Albert Einstein College of Medicine
New York, NY

Oxaliplatin Resistance in Colorectal Cancer Cells Induces Epithelial-to-Mesenchymal Transition

Anthony D. Yang, MD
University of Texas M.D. Anderson Cancer Center
Houston, TX

Clinical and Immunologic Responses in Cancer Patients with Stage IV Disease Treated with Autologous Tumor Cell-Based Vaccines Using a Universal GM-CSF Producing and CD40L-Expressing Bystander Cell Line (GM.CD40L): Early Results

Sophie Dessureault, MD
H. Lee Moffitt Cancer Center
Tampa, FL

Annual Heritage Presentation Honoring Charles M. Balch, MD

SSO President 1991-92

11:00 - 11:15 am

Presented by:

Alfred M. Cohen, MD
Director and CEO, Markey Cancer Center
Lexington, KY

American Cancer Society/SSO Basic Science Lecture

Genomic Applications for the Diagnosis and Treatment of Cancer

11:15 am - 12:00 Noon

Bruce Stillman, PhD, FRS
President
Cold Spring Harbor Laboratory
Cold Spring Harbor, NY

Introduction by:
Steven F. Sener, MD
Past President, ACS



**Lunch & Poster Session
in Exhibit Area**

Noon - 1:00 pm

Posters # P1 - P115 will be presented.

Parallel Sessions

1:00 - 3:00 pm

These sessions will feature abstract presentations specifically related to the following areas:

Gastrointestinal Cancer

*Moderators: Malcolm M. Bilimoria, MD and
Mokenge P. Malafa, MD*

The Prognostic Effect of Micrometastases in Previously Staged Lymph Node Negative (N0) Colorectal Carcinoma: A Meta-Analysis

Douglas M. Iddings, MD
John Wayne Cancer Institute
Santa Monica, CA

Which Gene is a Dominant Predictor of Response During FOLFOX Chemotherapy for the Treatment of Metastatic Colorectal Cancer, MTHFR or XRCC1 Gene?

D.Y. Kim, MD
Ajou University School of Medicine
Suwon, South Korea

Evaluation of Preoperative Therapy for Pancreatic Cancer Using a Prognostic Nongram

Rebekah White, MD
Memorial Sloan-Kettering Cancer Center
New York, NY

Stromal Osteonectin Overexpression is Associated with Poor Outcome in Patients with Periapillary Cancer

Mark Bloomston, MD
Ohio State University, Columbus, OH

Better Survival in Esophageal Cancer Patients After Surgical Treatment in University Hospitals. A Plea for Performance by Surgical Oncologists

C. Verhoef MD
University Medical Center Groningen
Groningen, Netherlands

Single Nucleotide Polymorphisms (SNPs) in the Promoter Region of the E-Cadherin Gene in Young Patients with Diffuse Gastric Cancer

Heriberto Medina-Franco, MD
National Institute of Medical Sciences and Nutrition,
Mexico City, Mexico

Pilot Study of Minimally Invasive Surgery for Gastric Cancer: Laparoscopic Assisted Distal Gastrectomy (LADG)

K. Koneri, MD, Kameda Medical Center
Kamogawa, Japan

Repeat Hepatectomy for Recurrent Colorectal Liver Metastasis: Analyses of Preoperative Prognostic Factors

Seiji Ishiguro, MD
National Cancer Center Hospital
Tokyo, Japan

Breast Cancer

*Moderators: Robert J. Goulet, Jr., MD and
Amy C. Degmin, MD*

Prior Axillary Surgery is Not a Contraindication to Sentinel Lymph Node Biopsy: Results of Reoperative Sentinel Lymph Node Biopsy in 133 Patients

C. Garcia-Etienne, MD
Memorial Sloan-Kettering Cancer Center
New York, NY

Serumproteomic Analysis Identifies a Highly Sensitive and Specific Discriminatory Pattern in Stage I Breast Cancer

Claudio Belluco, M, University of Padova
Padova, Italy

Detecting Occult Breast Cancer in Prophylactic Mastectomies: Sentinel Node Biopsy vs. Pre-Operative MRI

D. Black, MD, Massachusetts General Hospital
Boston, MA

Sentinel Lymph Node Biopsy Performed After Neoadjuvant Chemotherapy is Accurate in Patients with Documented Node-Positive Disease at Presentation

E.L. Newman, MD, University of Michigan
Ann Arbor, MI

Initial Outcomes for Patients Treated on the American Society of Breast Surgeons Mammo Site Clinical Trial for Ductal Carcinoma In Situ of the Breast

Jacqueline S. Jeruss, MD
University of Texas M.D. Anderson Cancer Center
Houston, TX

Lymphedema Therapy Reduces the Volume of Edema and Pain in Breast Cancer Patients

John B. Hamner, MD
University of Tennessee, Memphis, TN

Prospective Randomized Trial Comparing Intradermal, Intraparenchymal, and Subareolar Injection Routes for Sentinel Lymph Node Mapping and Biopsy in Breast Cancer

Stephen P. Pivoski, MD
Arthur G. James Cancer Hospital and Richard J. Solove
Research Institute and Comprehensive Cancer Center
of The Ohio State University, Columbus, OH

Is Sentinel Node Biopsy in DCIS Necessary?

Thomas B. Julian, MD
NSABP Operations Office and Allegheny General Hospital
Pittsburgh, PA

Friday, March 24

Parallel Sessions

1:00 - 3:00 pm

These sessions will feature abstract presentations specifically related to the following areas:

Melanoma

*Moderators: Kenneth K. Tanabe, MD and
Sandra L. Wong, MD*

Role of Microphthalmia Transcription Factor in Melanoma Prognosis and Differentiation

George I. Salti, MD
University of Illinois at Chicago
Chicago, IL

Downregulation of Pro-Apoptosis Genes in an Early Event in the Progression of Malignant Melanoma

Eric H. Jensen, MD
H. Lee Moffitt Cancer Center and Research Institute
Tampa, FL

Role of BAY 43-9006 in Combination with Temozolomide and Melphalan in Metastatic Melanoma

Jin Yoo, MD
Duke University Medical Center
Durham, NC

AJCC Nodal Factors and Microscopic Tumor Burden Predict Recurrence in Sentinel Lymph Node Positive Stage III Melanoma Patients

Robert H. Andtbacka, MD
University of Texas M.D. Anderson Cancer Center
Houston, TX

Is the 10% Rule Appropriate for Sentinel Lymph Node Biopsy for Melanoma?

H. Kroon, MD
University of Michigan
Ann Arbor, MI

Patients (pts) Prognosis and Clinico-Pathological Factors Influencing False Negative (FN) Results of Sentinel Lymph Node (SLN) Biopsy in Cutaneous Melanoma (CM)

Zbigniew I. Nowecki, MD
Cancer Center – Institute
Warsaw, Poland

Peri-Operative Adjuvant Biotherapy for Resected Cutaneous Melanoma: An Update on 5 Years of Follow-up

John L. Zapas, MD
Franklin Square Hospital Center
Baltimore, MD

Intraoperative Evaluation of Sentinel Lymph Nodes for Metastatic Melanoma by Imprint Cytology

V. Soo, MD
Wake Forest University
Winston-Salem, NC

Endocrine/Head & Neck

Moderators: John A. Olson, Jr., MD and Ashok Shaha, MD

Survival Benefit of Extensive Hepatic Cyto-reduction for Symptomatic Metastases from Neuroendocrine Tumors

Farin F. Amersi, MD
John Wayne Cancer Institute
Santa Monica, CA

Four-Dimensional Computed Tomography: A Novel Imaging Modality for Localization of Parathyroid Tumors

S.E. Rodgers, MD
University of Texas M.D. Anderson Cancer Center
Houston, TX

Hypocalcemia in Patients Taking Imatinib Mesylate

Frank J. Quayle, MD
Washington University School of Medicine
St. Louis, MO

Sonographically Guided Fine Needle Aspiration with Rapid Parathyroid Hormone Assay: A New Localization Technique for Remedial Parathyroid Surgery

Christina L. Maser, MD
Yale University
New Haven, CT

Is Tumor Size the Best Predictor of Outcome for Papillary Thyroid Cancer?

Y. Cheema, MD
University of Wisconsin
Madison, WI

Positron Emission Tomogram (PET) Detected Thyroid Incidentalomas: Need for Further Investigation?

Chandrakanth Are, MD
Memorial Sloan-Kettering Cancer Center
New York, NY

New Parameters in Risk Stratification in Papillary Thyroid Carcinoma: Eosinophilic Infiltration, Glutathione S-Transferases and Genomic Instability

Sadir Alrawi, MD
Roswell Park Cancer Institute
Buffalo, NY

Photodynamic Therapy for Head and Neck Neoplasia Using Photofrin®

Rosa E. Cuenca, MD
Leo Jenkins Cancer Center, Brody School of Medicine
East Carolina University
Greenville, NC

Friday, March 24

Cancer Forum II – Translational Research

1:00 - 3:00 pm

Moderators: Jeffrey F. Moley, MD and Timothy J. Yeatman, MD

Omega- Fatty Acids Prevent Early Pancreatic Neoplasia in EL-Kras Transgenic Mice

Laleh Golkar, MD
Robert H. Lurie Comprehensive Cancer Center
Northwestern University Feinberg School of Medicine
Chicago, IL

Real-Time Intraoperative Imaging Using Invisible Near-Infrared Light

John V. Frangioni, MD
Beth Israel Deaconess Medical Center, Boston, MA

Metastasis of Papillary Thyroid Carcinoma is Associated with BRAF Gene Mutation

Joseph Kim, MD
John Wayne Cancer Center, Santa Monica, CA

Correlation of Breast Cancer Protein and Gene Expression Profiles with ER Status

Susanna H. Shin, MD
Eastern Virginia Medical School, Norfolk, VA

Photodynamic Therapy for Treatment of Self-expandable Metal Stent Luminal Obstruction

Rosa E. Cuenca, MD
Leo Jenkins Cancer Center, Brody School of Medicine and Physics Department, East Carolina, Greenville, NC

Dynamic Contrast Magnetic Resonance Imaging Detects Premalignant High-Grade Dysplasia in Epithelial Carcinogenesis Via Identification of Enhanced Microvascular Permeability

Jeffrey M. Arbeit, MD
Washington University in St. Louis, St. Louis, MO

Imaging the Role of Splenocytes in Promoting Liver Metastases

Michael Bouvet, MD
University of California San Diego, San Diego, CA

Poster Discussion Session (Posters #P1 – P115)

3:00 – 4:00 pm

This session will encourage meaningful discussion and constructive critique of recent research findings. Over 100 posters will be displayed. Authors will be present.

Symposium

What's New in Ablative Therapies for Malignant Tumors

4:00 - 6:00 pm

Moderator: Michael Choti, MD

Indications and Evidence for Radiofrequency Ablation of Liver Tumors

Anton Bilchik, MD
John Wayne Cancer Institute
Santa Monica, CA

Microwave Ablation: The Next Modality?

David M. Mahvi, MD
University of Wisconsin
Madison, WI

Ablative Approaches to Pulmonary, Renal and Bone Tumors

Robert G. Martin, MD
University of Louisville
Louisville, KY

Where Do We Go from Here? Improving Targeting and Monitoring of Ablative Therapy

Michael A. Choti, MD
Johns Hopkins University School of Medicine
Baltimore, MD

Case Presentations and Panel Discussion

Friday, March 24

Clinical Trials Highlights 2006

4:00 - 6:00 pm

Moderator: Margaret Mooney, MD

Introduction and Update on NCI Trial Priorities

Margaret Mooney, MD
National Cancer Institute
Bethesda, MD

Open Trials and New Concepts

Gastrointestinal Cancer Trials

Heidi Nelson, MD
Mayo Clinic, Rochester, MN
Nicholas J. Petrelli, MD
Helen F. Graham Cancer Center
Newark, DE

Thoracic Cancer Trials

Leslie Kohman, MD
SUNY Upstate Medical University
Syracuse, NY

Bryan Meyers, MD
Barnes Jewish Hospital
St. Louis, MO

Breast Cancer Trials

Kelly K. Hunt, MD
University of Texas M.D. Anderson Cancer Center
Houston, TX

Terry Mamounas, MD, MPH
Aultman Cancer Center
Canton, OH

Panel Discussion

Saturday, March 25

Meet the Professor Breakfasts

6:45 - 7:45 am

Registration Required • Fee: \$35 • Limit: 25 per breakfast

Each continental breakfast will feature presenters of international prominence.

To ensure your selection, please register as early as possible. Indicate your selection on the enclosed registration form.

B9 Handoscopy: It's a Role in Colectomy

Bob Cima, MD

B10 Adrenal Tumors – Interesting Cases and Best Approaches

Jeffrey E. Lee, MD

B11 The Role of Neoadjuvant Therapy Esophageal Cancer

Stephen G. Swisher, MD

B12 Rectal Cancer Adjuvant, Who and When?

David A. Rothenberger, MD

B13 Rectal Cancer Sphincter Preservation Options

Timothy J. Yeatman, MD

B14 Colorectal Metastases – New Methods for Optimal Liver Resection

Bryan Clary, MD

B15 Breast Cancer – Neoadjuvant Practical Applications

Lisa A. Newman, MD

Saturday, March 25

Plenary Session III

8:00 - 9:00 am

Moderator: William G. Cance, MD

Endoscopic Ultrasound-guided Fine Needle Aspiration of Visible Celiac Nodes is Essential for Determining Prognosis in Patients with Distal Esophageal Cancer: A Survival Analysis in 71 M1a Patients

Eric Frechetti, MD
Laval Hospital, Quebec, Canada

A Phase II Trial of Bevacizumab with or without Low-Dose Interferon-alpha in Patients with Metastatic Malignant Melanoma

Kimberly A. Varker, MD
The Ohio State University Comprehensive Cancer Center
Columbus, OH

Feasibility of Sentinel Lymph Node in Differentiated Thyroid Carcinoma

Paolo Carcoforo, MD
Sant'Anna Hospital
Ferrara, Italy

Correlation of Bone Marrow Micrometastases with Sentinel Lymph Node Status in 410 Early Stage Breast Cancer Patients

Igor Langer, MD
Swiss Multicenter Study Group Sentinel Lymph Node in Breast Cancer
Basel, Switzerland

James Ewing Lecture

Surgical Oncology in the Genome Era

9:00 - 9:45 am



James S. Economou, MD, PhD
Director, UCLA Human Gene Medicine Program, Deputy Director, UCLA Jonsson Comprehensive Cancer Center, University of California at Los Angeles
Los Angeles, CA

Plenary Session IV

10:15 - 11:15 am

Moderator: Fabrizio Michelassi, MD

Factors Associated with Treatment Failure in T1bN0 Breast Cancer Patients

Timothy J. Kennedy, MD
Northwestern University
Chicago, IL

Phase II Study of Imatinib Mesylate in Patients with Metastatic Medullary Thyroid Carcinoma (MTC): An Interim Analysis

Mark S. Cohen, MD
Washington University School of Medicine
Alvin J. Siteman Cancer Center
St. Louis, MO

EGF Pathway Activation in Hepatocellular Carcinoma is a Prognostic Predictor of Survival and a Potential Target for Biologic Therapy

Jason M. Foster, MD
Roswell Park Cancer Institute
Buffalo, NY

High-Resolution Positron Emission Mammography in Breast Cancer

Zandra H. Cheng, MD
Anne Arundel Medical Center
Annapolis, MD

Saturday, March 25

John Wayne Clinical Research Lecture

**Lessons Learned from 30 Years
of Clinical Research**



11:15 am - 12:00 Noon

Murray F. Brennan, MD
Chairman, Department of Surgery
Memorial Sloan-Kettering Cancer Center
New York, NY

**Lunch & Poster Session
in Exhibit Area**

Noon - 1:00 pm

Posters # P116 – P230 will be presented.

Cancer Forum III – Immune and Gene Therapy

1:00 – 3:00 pm

Moderators: David C. Linehan, MD and George E. Peoples, Jr., MD

**NBL1: A Novel Methylation Target
in Colon Cancer**

Quan P. Ly, MD
Moffitt Cancer Center & Research Institute
Tampa, FL

**Creation and Validation of a Novel Herpes
Simplex Virus with Diagnostic and Therapeutic
Potential in Pancreatic Cancer**

James J. Mezhir, MD
University of Chicago
Chicago, IL

**Tumor Selective Vaccinia Mutant is Effective
in the Treatment and Prevention of Peritoneal
Carcinomatosis in a Mouse Model**

Sricharan Chalikonda, MD
Cleveland Clinic Foundation
Cleveland, OH

**Involvement of Bcl Gene Family Members
in Anti-4-1BB-Induced T Cell Survival
and Antitumor Reactivity**

Hidde M. Kroon, MD
University of Michigan
Ann Arbor, MI

**Nanoscale Platform for Radioinducible
Gene Therapy**

Hank Schmidt, MD
University of Chicago
Chicago, IL

**Targeting and Bioluminescence Imaging
of a Novel Herpes Simplex Virus is Dependent
on Tumor MEK Activity**

Kerrington Smith, MD
University of Chicago
Chicago, IL

**Activated Murine Liver Plasmacytoid Dendritic
Cells are Able to Stimulate NK Cells and T Cells**

T. Peter Kingham, MD
Memorial Sloan-Kettering Cancer Center
New York, NY

**The Therapeutic value of Protein Monoclonal
Antibodies Directed Against Immunogenic
Tumor Glycoproteins**

Myron Arlen, MD
North Shore University Hospital
Manhasset, NY

Parallel Sessions

1:00 - 3:00 pm

These sessions will feature abstract presentations specifically related to the following areas:

Gastrointestinal Cancer

*Moderators: Philip B. Paty, MD and
Jean-Nicolas Vauthey, MD*

**Armless Navigation and Image-guidance
During Abdominal Exploration for Recurrent
Colorectal Cancer**

Ergun Kocak, MD
Ohio State University
Columbus, OH

**Adjuvant Radiation Therapy Improves
Survival for Gallbladder Carcinoma**

Pablo Mojica, MD
City of Hope National Medical Center
Duarte, CA

**Loss of MAL Expression in Precancerous (Dysplastic)
Lesion of the Esophagus**

Koshi Mimori, MD
Medical Institute of Bioregulation, Kyushu University
Beppu, Japan

**Gene Expression Profiling of Gastric
Cancer Reveals a Lymph Node Metastatic
Transcriptional Fingerprint**

Claudio Belluco, MD
University of Padova
Padova, Italy

**Lymphadenectomy for Adenocarcinoma
of the Gastroesophageal Junction**

Andrew P. Barbour, MD
Memorial Sloan-Kettering Cancer Center
New York, NY

**mTOR Inhibition Potentiates Cytotoxic Therapy
Against Pancreatic Cancer Through Tumore
Vessel Thrombosis and Inhibition of
Hypoxia-Inducible Factor-1**

Koji Fujimoto, MD
Kyoto University, Kyoto, Japan

**Recurrence of Pseudomyxoma Peritonei After
Cytoreduction and Hyperthermic Intraperitoneal
Chemotherapy: Location, Treatment, and Outcome**

Robert Smeenk, MD
The Netherlands Cancer Institute
Antoni van Leeuwenhoek Hospital
Amsterdam, Netherlands

**Carcinoid of the Rectum Risk Stratification (CaRRS):
A New Strategy for Preoperative Outcome Assessment**

Bridget N. Fahy, MD
Memorial Sloan-Kettering Cancer Center, New York, NY

Breast Cancer

*Moderators: Kelly K. Hunt, MD and
David J. Winchester, MD*

**Frequency of BRCA1 and BRCA2 Genomic
Rearrangements and Mutations in Men with Breast
Cancer: A Clinic-based Study in the United States**

Julia Tchou, MD
University of Pennsylvania
Philadelphia, PA

**Lymph Node Metastatic Fingerprint Revealed
by Genome-Wide Transcriptional Profiling of
Primary Breast Cancer**

Claudio Belluco, MD
University of Padova
Padova, Italy

**Characteristics and Treatment of Metaplastic Breast
Cancer: Analysis of 892 Cases from the National
Cancer Data Base**

Christopher M. Pezzi, MD
Abington Memorial Hospital
Abington, PA

**Type and Duration of Exogenous Hormone
Use Does Not Affect Receptor Status when
Breast Cancers Develop**

Anjali S. Kumar, MD
University of California San Francisco
San Francisco, CA

**How Many Sentinel Nodes Should
be Removed in Breast Cancer?**

Michael S. Sabel, MD
University of Michigan
Ann Arbor, MI

**Upstaging and Improved Survival of Early Breast
Cancer Patients after Implementation of Sentinel
Node Biopsy for Routine Axillary Staging**

Kimberly Vanderveen, MD
University of California – Davis
Sacramento, CA

**Results of MRI Screening for Breast Cancer
in High Risk Patients with LCIS and Atypical
Ductal Hyperplasia**

Elisa R. Port, MD
Memorial Sloan-Kettering Cancer Center
New York, NY

**Conflicts in Decision-Making
for Breast Cancer Surgery**

Diane M. Opatt, MD
Fox Chase Cancer Center, Philadelphia, PA

Saturday, March 25

Parallel Sessions

1:00 - 3:00 pm

These sessions will feature abstract presentations specifically related to the following areas:

Sarcoma

Moderators: Samuel Singer, MD and Sam S. Yoon, MD

Use of Tissue Expanders and Preoperative External Beam Radiotherapy in the Treatment of Retroperitoneal Sarcoma

Jonathan S. White, MD
Tom Baker Cancer Centre
Calgary, Canada

Neoadjuvant Gleevec is Effective in the Treatment of High-risk Gastrointestinal Stromal Tumors

Cletus Arciero, MD
Fox Chase Cancer Center
Philadelphia, PA

Retroperitoneal and Truncal Sarcomas: Prognosis Depends Upon Type Not Location

E.A. Perez, MD
University of Miami
Miami, FL

Outcome of Metastatic GIST in the Era Before Imatinib Mesylate

Jason S. Gold, MD
Memorial Sloan-Kettering Cancer Center
New York, NY

A 30 Year Review of Primary Breast Sarcomas Evaluated at a Single Institution

Ying Wei Lum, MD
Johns Hopkins
Baltimore, MD

Lymph Drainage Pattern of the Peritoneal Space: Intraoperative Lymph Travels via Visceral Bowel Lymphatics to the Thoracic Duct

Cherie P. Parungo, MD
Brigham & Women's Hospital
Boston, MA

Hepatectomy and Lung Radiofrequency Ablation for Hepatic and Subsequent Pulmonary Metastases from Colorectal Carcinoma

Tristan D. Yan, MD
St. George Hospital
Sydney, Australia

Thoracoscopic Localization's Techniques for Patients with Lung Cancer

Davide Sortini, MD
University of Ferrara
Ferrara, Italy

Outcomes/Surgical Specialties

Moderators: Tara Breslin, MD and Larissa Temple, MD

Validation of a Predictive Model for Sentinel Lymph Node Metastases in Melanoma

Michael S. Sabel, MD
University of Michigan
Ann Arbor, MI

Size of Metastasis in the Sentinel Node Predicts Additional Nodal Involvement in Penile Carcinoma

Bin Kroon, MD
The Netherlands Cancer Institute
Amsterdam, Netherlands

DOD Award: Phase I Trial of Anti-prostate Cancer Therapy via Anti-PSMA Designer T Cell Autografting

Richard P. Junghans, MD
Boston University School of Medicine
Roger Williams Medical Center
Providence, RI

Phase II Trial to Evaluate Gemcitabine and Etoposide for Locally Advanced or Metastatic Pancreatic Cancer

Marianne K. Lange, MD
Spectrum Health/Michigan State University
Grand Rapids, MI

Advanced Generation Anti-CEA Designer T Cell Therapy of Adenocarcinoma

Richard P. Junghans, MD
Boston University School of Medicine
Roger Williams Medical Center
Providence, RI

Impact of Surgical Palliation on Quality of Life in Patients with Advanced Malignancy: Results of the Decision and Outcome in Palliative Surgery (DOPS) Trial

Yale D. Podnos, MD
City of Hope National Medical Center
Duarte, CA

A Systematic Review of Deep Venous Thrombosis Prophylaxis in Cancer Patients: Implications for Improving Quality

Michael J. Leonardi, MD
UCLA, Los Angeles, CA

Teaching Palliation and End of Life Care: A Core Curriculum for Surgical Residents

D.D. Klaristenfeld, MD
Brown University
Providence, RI

Saturday, March 25

Poster Discussion Session (Posters #P116 – P230)

3:00 – 4:00 pm

*This session will encourage meaningful discussion and constructive critique of recent research findings.
Over 100 posters will be displayed. Authors will be present.*

Clinical Affairs Committee Program

The Role of Neoadjuvant Therapy: New Perspectives and Strategies

4:00 - 5:30 pm

Moderator: Martin J. Heslin, MD

**Neoadjuvant Therapy for Operable Breast Cancer:
Pitfalls and Possibilities**

Kelly K. Hunt, MD
University of Texas M.D. Anderson Cancer Center
Houston, TX

Rectal Cancer: Future of Neoadjuvant Strategies

Nipun Merchant, MD
Vanderbilt University Medical Center
Nashville, TN

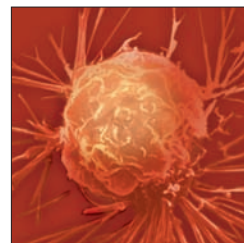
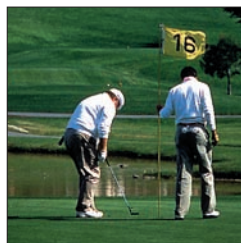
Neoadjuvant Therapy in Extremity Sarcoma

Peter W.T. Pisters, MD
University of Texas M.D. Anderson Cancer Center
Houston, TX

**Preoperative Radiation Therapy for Retroperitoneal
Sarcoma: Safety and Efficacy of Focused Dose
Escalation**

Martin J. Heslin, MD
University of Alabama
Birmingham, AL

Discussion



Saturday, March 25

Cine Clinic

4:00 - 5:30 pm

Moderator: *N. Joseph Espat, MD*

Laparoscopic Resection of a Large Mucocele with Malignant Potential

Ron G. Landmann, MD
Memorial Sloan-Kettering Cancer Center
New York, NY

Laparoscopic Splenic Preserving Distal Pancreatectomy

John H. Wang, MD
SUNY Stony Brook
Stony Brook, NY

Laparoscopic Assisted Distal Gastrectomy with Lymph-Node Dissection for Early Gastric Cancer

Hisakazu Hoshi, MD
Kameda Medical Center
Kamogawa, Japan

A Combined Endoscopic and Laparoscopic Endoluminal Surgical Resection of a Proximal Gastric Gastrointestinal Stromal Tumor

Eric Wallace, MD
University of Iowa
Iowa City, IA

Laparoscopic Palliation of Metastatic Gastric Cancer

Stephanie Dunkle-Blatter, MD
Geisinger Medical Center
Danville, PA

Annual SSO Business Meeting

5:30 - 6:30 pm

- I. Call to Order – *Timothy J. Eberlein, MD*
- II. President's Report – *Timothy J. Eberlein, MD*
 - Recognition of Program Chair
 - Announce Resident Essay Winners
- III. Secretary's Report – *Fabrizio Michelassi, MD*
 - In Memoriam
 - Introduction of New Members
- IV. Treasurer's Report – *William G. Cance, MD*
- V. Annals of Surgical Oncology
Charles M. Balch, MD
- VI. Recognition of Outgoing Councillors
Timothy J. Eberlein, MD
- VII. Nominating Committee Report
John M. Daly, MD
- VIII. Introduction of New President
- IX. New Business – *Raphael E. Pollock, MD, PhD*
 - 2007 Annual Meeting – Washington, D.C.
- X. Adjourn – *Raphael E. Pollock, MD, PhD*

SSO President's Reception and Banquet

7:00 - 10:00 pm

Registration Required • Black Tie Optional

All physicians and their registered guests are invited to attend this gala event honoring SSO President Timothy J. Eberlein, MD.

Also honored will be this year's James Ewing Layman's Award winner.

Sunday, March 26

Breakfast Symposium

**Multidisciplinary Management of Colorectal Cancer Metastases:
Current and Emerging Trends**

7:00 – 9:00 am

Moderator: Anton Bilchik, MD

**Expanding the Criteria for Hepatic Resection:
Are Old Criteria Obsolete?**

Yuman Fong, MD
Professor Surgery
Memorial Sloan-Kettering Cancer Center
New York, NY

**Multimodal Therapy in Downstaging Hepatic
Metastases and Improving Resectability**

Jean-Nicolas Vauthey, MD
Professor of Surgery
University of Texas M.D. Anderson Cancer Center
Houston, TX

**A New Era of Effective Chemotherapeutic
and Biologic Agents in Metastatic Colorectal Cancer**

Lee Rosen, MD
Premiere Oncology and the John Wayne Cancer Institute
Santa Monica, CA

**Tailoring Chemotherapy in Metastatic
Colorectal Cancer Using Molecular Profiling.
Are We There Yet?**

Robert Diasio, MD
Professor Medical Oncology,
University of Alabama
Birmingham, AL

Discussion

Clinical Update in Colon Cancer

9:00 – 11:00 am

Moderator: Elin Sigurdson, MD

Introduction

Elin Sigurdson, MD

**Primary Prevention and Screening for Colorectal
Cancer in the General Population**

Monica M. Bertagnolli, MD
Brigham and Women's Hospital
Boston, MA

**Screening and Management of Patients
with a Familial Risk for Colorectal Cancer**

Jose G. Guillem, MD
Memorial Sloan-Kettering Cancer Center
New York, NY

**Management of the Malignant Polyp
in the Colon and Rectum**

Santhat Nivatvongs, MD
Mayo Clinic
Rochester, MN

Prognosis of the Patient with Colon Cancer

Hartley S. Stern, MD
University of Ottawa
Ottawa, Canada

Adjourn – 11:00 am